

Marbled Murrelets

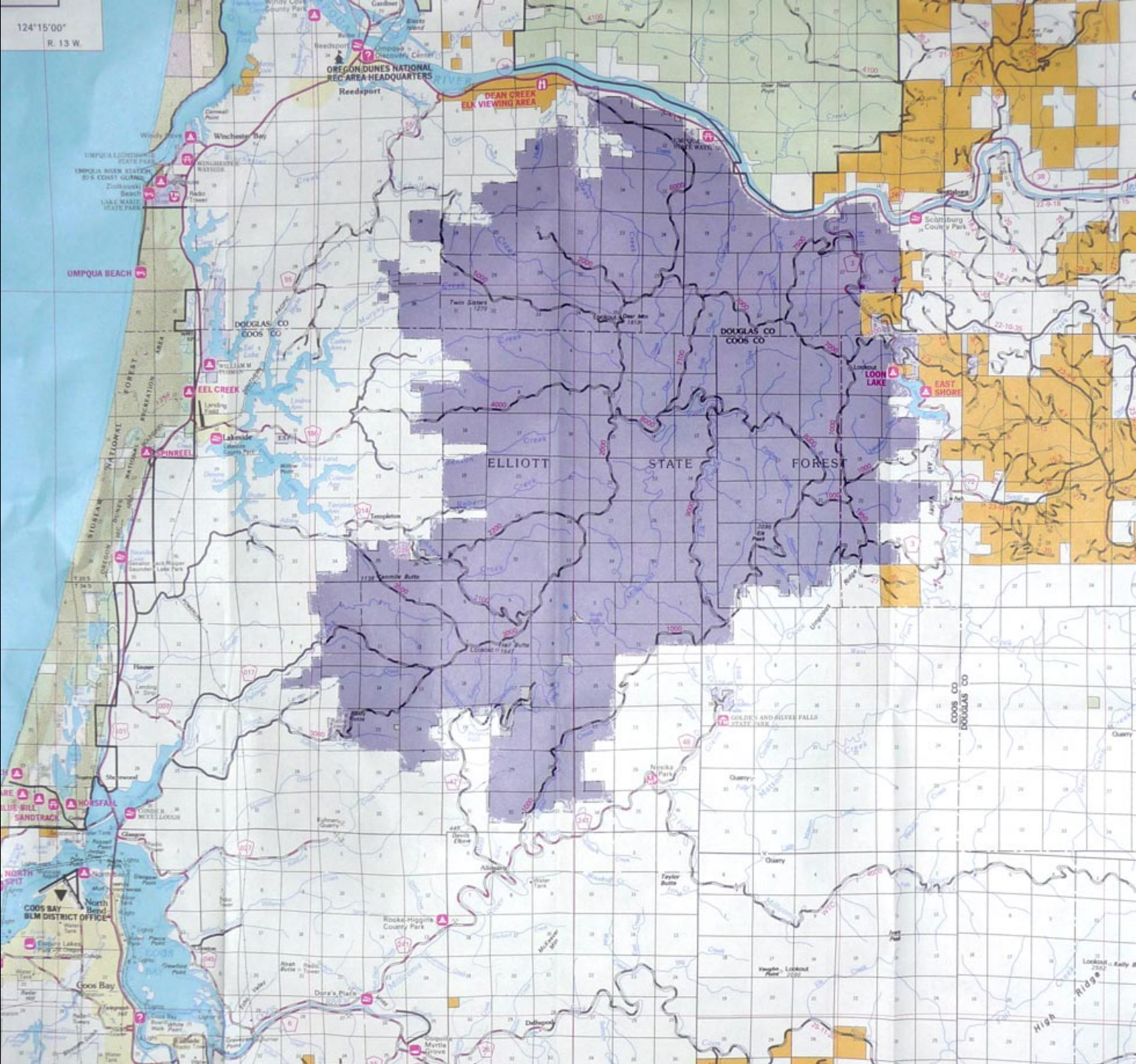
a remarkable creature nesting in the Elliott State Forest,

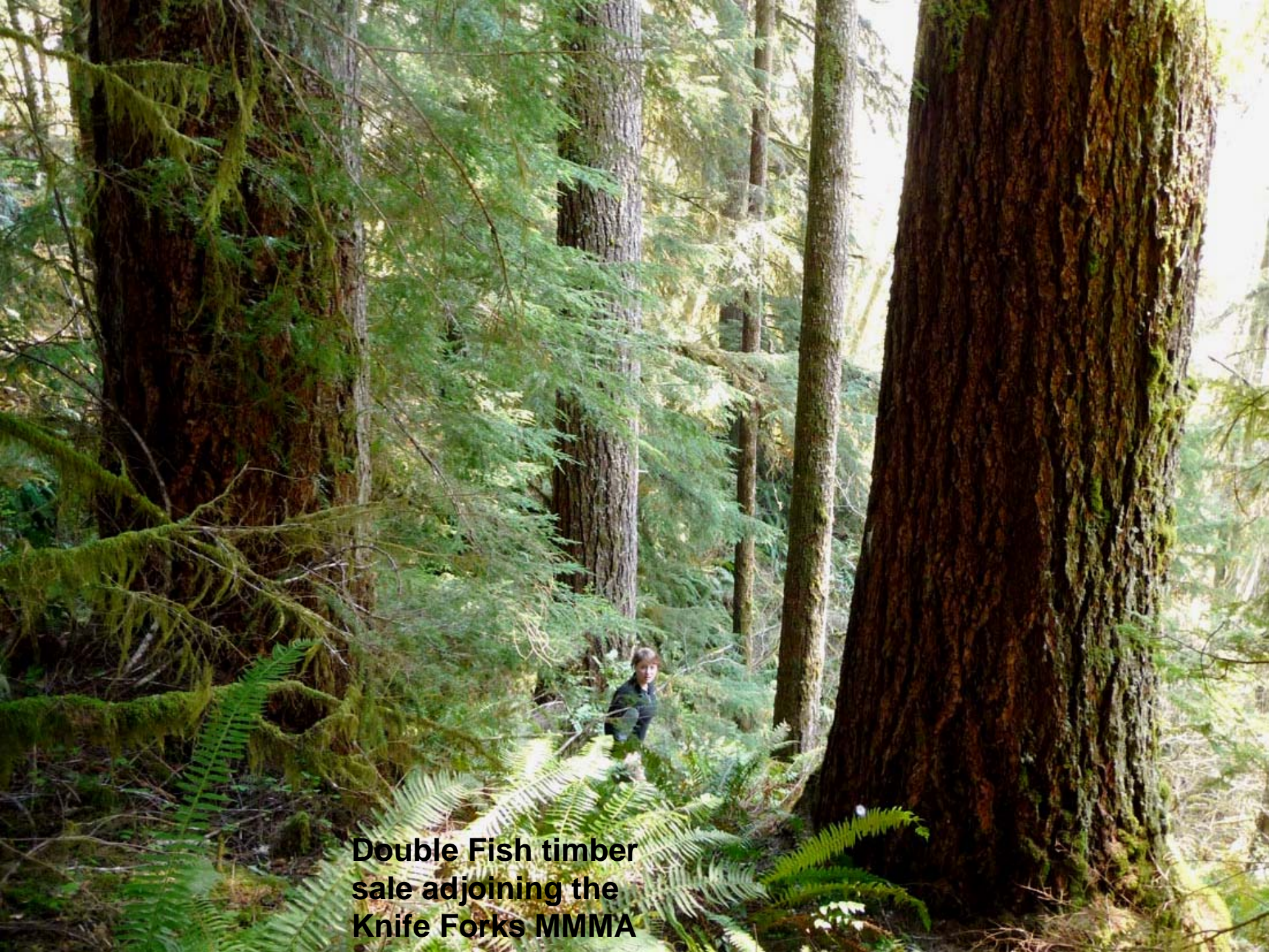


Marbled Murrelets are seabirds that depend on old coastal forests to raise their young.

Only old, coastal trees have enough moss and limbs big enough to hold their egg, without a nest.

124°15'00"
R. 13 W.

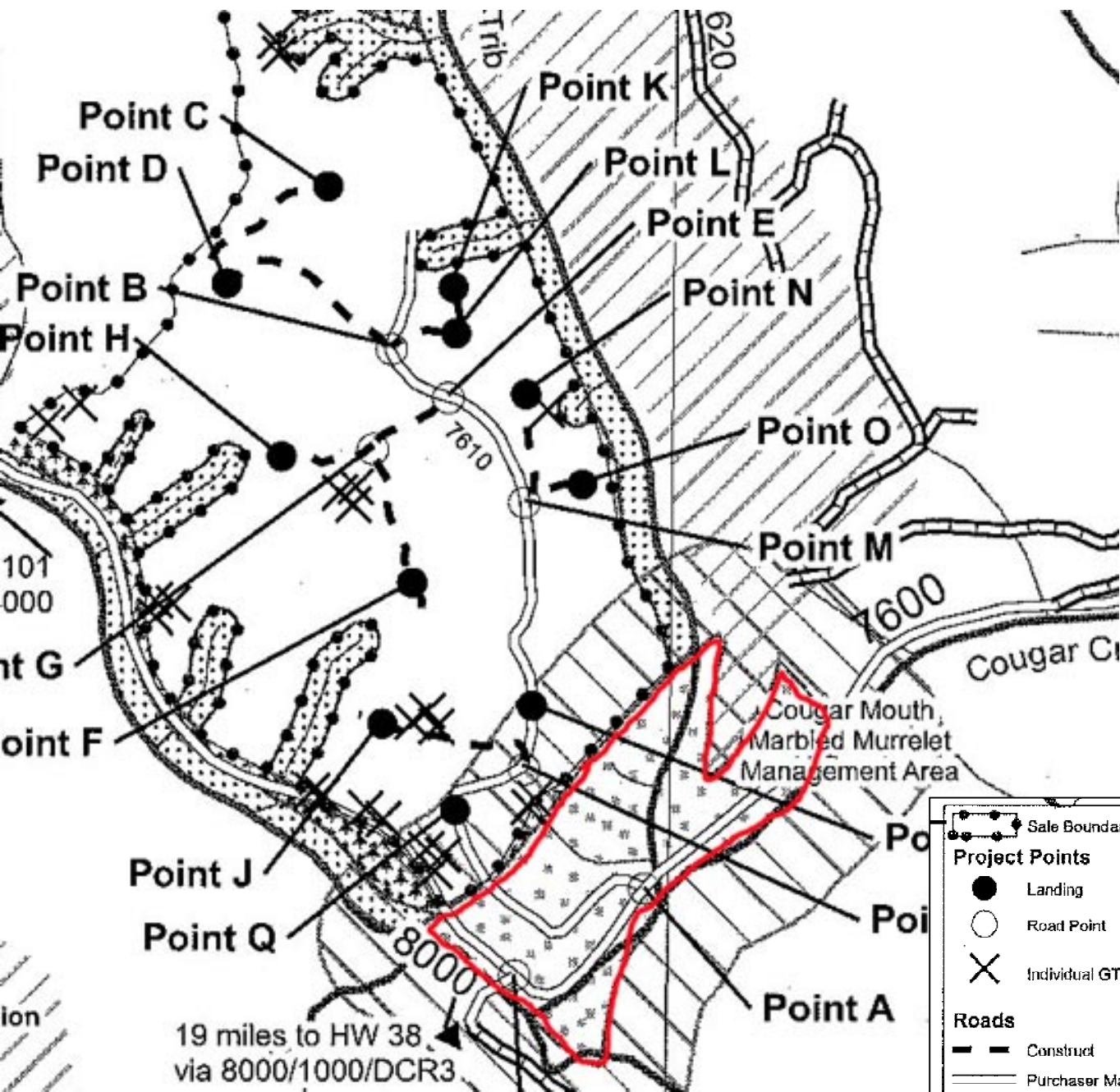




**Double Fish timber
sale adjoining the
Knife Forks MMMA**

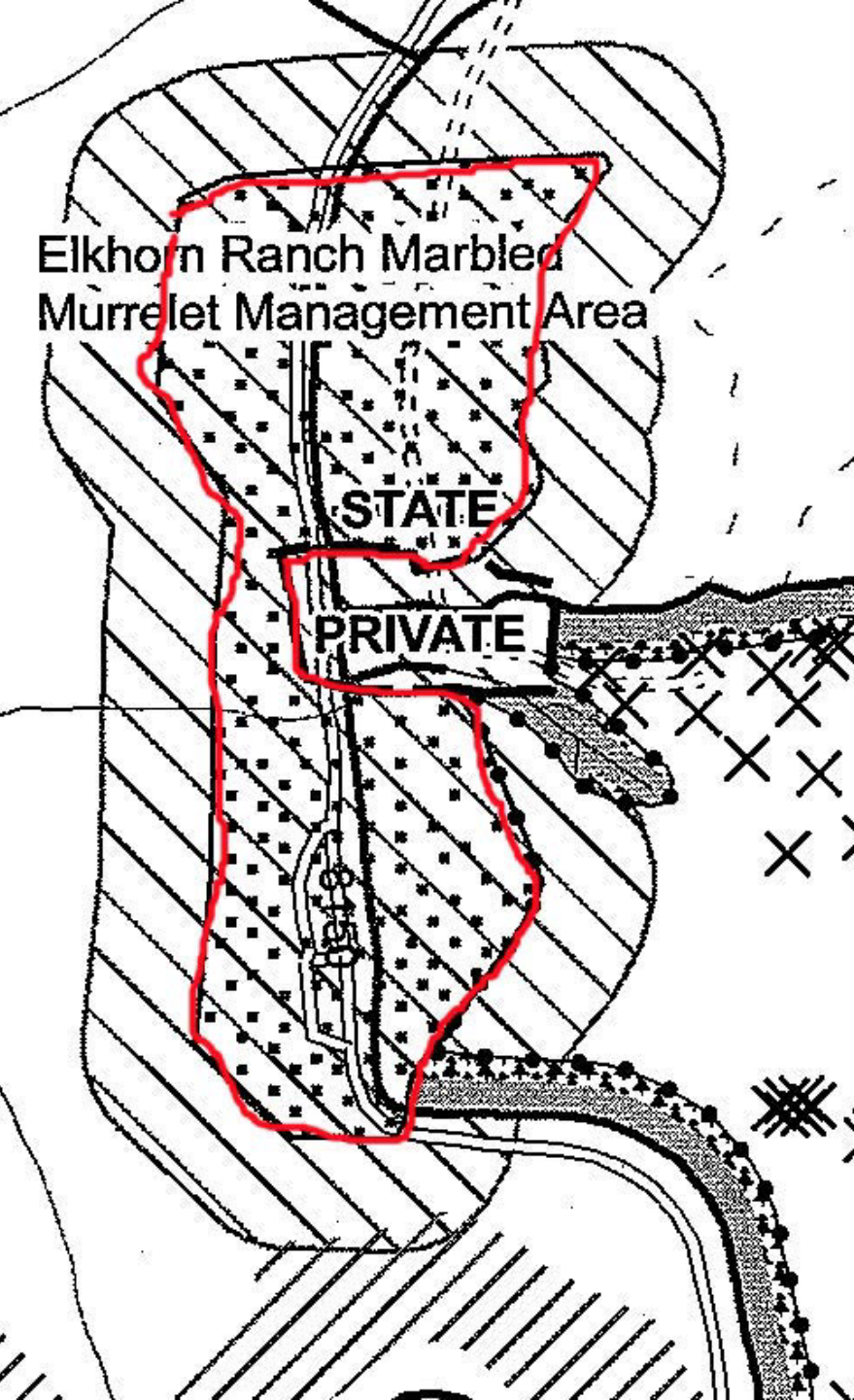


**Millicoma Cougar timber
sale, to be auctioned 1-20-10**



19 miles to HW 38
via 8000/1000/DCR3

	Sale Boundary		Riparian Management Area
Project Points		Streams	
	Landing		Type F
	Road Point		Type N
	Individual GTR		Seasonal
	Construct		Grouped GTR
	Purchaser Maintained		Reprod; <30 years old
	State Maintained		Marbled Murrelet Management Area
			Marbled Murrelet Seasonal Restricted Area



Camping areas near the Millicoma River, like shown below off of road 8100, were incorporated into the Elkhorn Ranch MMMA.





Bowl Bound Beaver sale.
Trees below are the
“Trout Mouth MMMA”



New road through the Trout Mouth MMMA

**Millicoma
Cougar
timber sale.**







The Elliott's temperate rainforests store more carbon than virtually any other forest in the world.

Old forests store three times more carbon than plantation forests.

Forests store far more carbon than in the timber products they produce.