

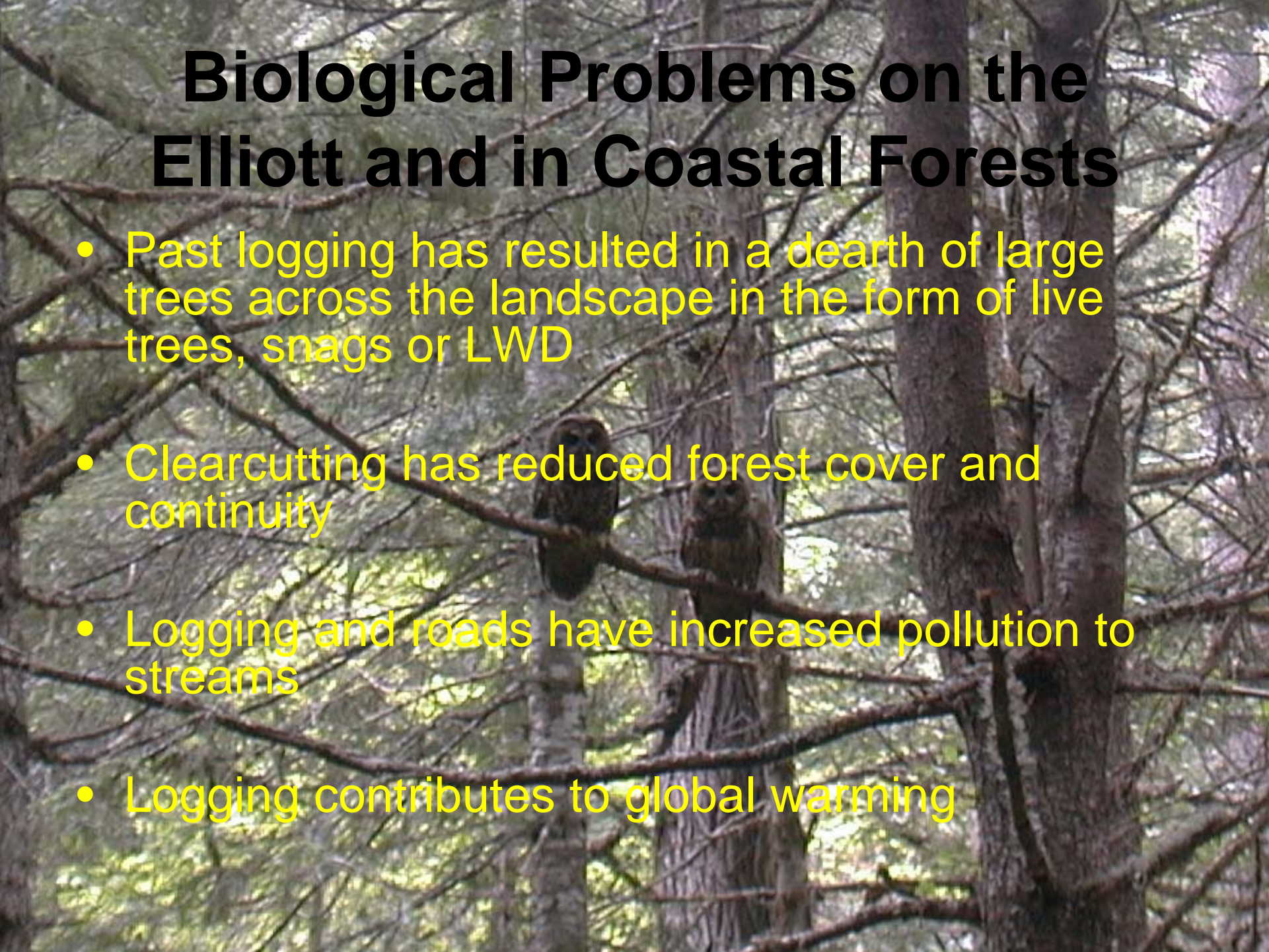
New Thinking is Needed on the Elliott State Forest



Noah Greenwald
Endangered Species Program Director
Center for Biological Diversity

Biological Problems on the Elliott and in Coastal Forests

- Past logging has resulted in a dearth of large trees across the landscape in the form of live trees, snags or LWD
- Clearcutting has reduced forest cover and continuity
- Logging and roads have increased pollution to streams
- Logging contributes to global warming



The 1995 HCP Made these Problems Worse and the new HCP will make them worse still

- The existing HCP allowed logging of 22,000 acres of spotted owl habitat and 2,380 acres of unsurveyed murrelet habitat
- Owls steadily declined under the HCP from 24 sites to 13 or fewer sites last surveyed in 2003
- Substantial harvest of older forest with concurrent loss of old forest structures

Contingency Planning

- A** – Retain 1995 owl HCP and take avoidance for murrelet
- B** – Suspend work on revised HCP, develop new plan using take avoidance, terminate 1995 HCP
- C** – Continue managing under 1995 HCP and revised HCP until revision process is successfully concluded
- D** – Sell Elliott State Forest
- or Combination of **B** & **C**



